



MOUNTAINS TO SEA
CONSERVATION TRUST

KAIPARA WĀNANGA
PROGRAMME | 2026
'Connection'



WAI
CONNECTION
TATAI KI TE WAI



Ministry for the
Environment
Manatū Mō Te Taiao

**TE KIA ORA
MARAE**

Introduction	3
Timeline	4
Day 1 - Wednesday Connection to Tangata - Community Open Day	4
Day 2 - Thursday Connection to te taiao - Field Trips and Social Evening	5
Day 3 - Friday Building and Maintaining Connections - Workshops and Activities	6
Day 3 - Friday cont. Start of Mountains to Sea Crew Training	7
Day 4 - Saturday Marine Monitoring Showcase & Crew Training	8
Day 5 - Sunday Crew Training Continued	9
Tikanga - Protocols	10
Getting There	11
Driving	11
Locations	11
Parking	11
What to Bring	11
Refunds and Cancellation Policy	12

Version 2 | Updated on 23.03.2026



Introduction

We are excited to announce our 2026 annual Mountains to Sea wānanga, delivered in partnership with Te Kia Ora Marae. Te Kia Ora Marae is located in Kaipara and is home to the hapū Ngāti Rango, of the Ngāti Whātua iwi. The wānanga will be hosted from the 8-12th of April.

The theme for our 2026 wānanga is “Connection”, reflecting the kaupapa of the Wai Connection Project and our relationships with people, place, and te taiao. The aim of this event is to showcase and celebrate what is happening locally and nationally, while fostering meaningful connections.

Registrations are essential. The link to register for the wānanga can be found [here](#).


Your registration will include all meals, accommodation during the event, local field trips, a social evening and a facilitated workshop.

Thanks to the Ministry of Environment for funding this event through our Wai Connection project. Additional funding support has been provided by Foundation North.

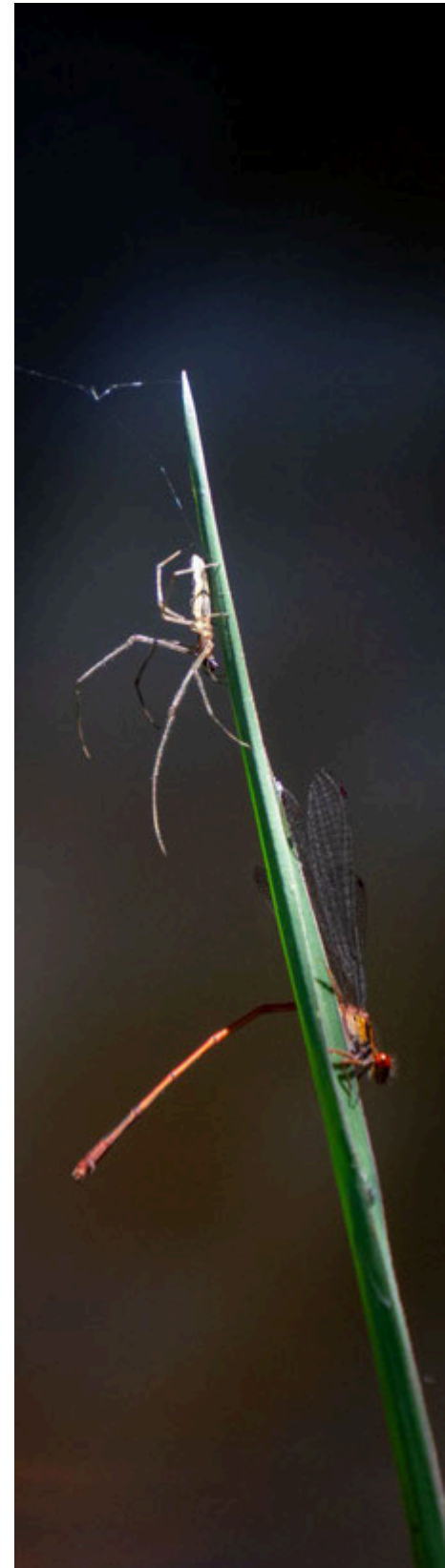
This is an evolving document and we will share new versions of the programme as our planning progresses.

Please feel free to contact Patricia on patricia@mountainstosea.org.nz if you have any questions.

Ngā mihi nui



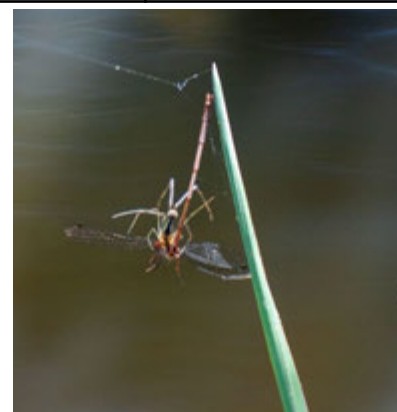
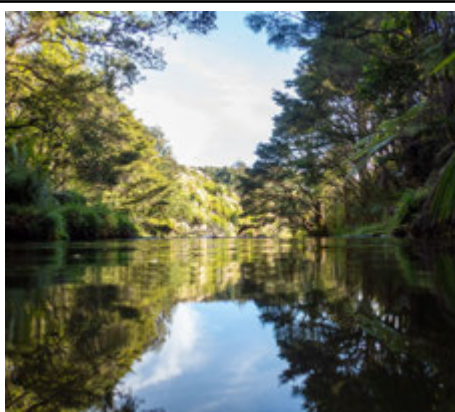
National Coordinators
Lorna Doogan | 021 027 32339 and
Patricia Hawkins | +61 447 161144



Timeline

Day 1 - Wednesday | Connection to Tangata - Community Open Day

Time	Activity	Location	Audience	
0930-1000	Arrive at Te Kia Ora Marae	Te Kia Ora Marae	Community Wānanga Attendees MTS Crew Haukāinga	
1000-1200	Guided Pōwhiri & Haukāinga Introduction			
1200-1215	Whakawhanaungatanga - Introduction Bingo			
1215-1300	<i>Karakia Whakanoa Lunch</i>			
1300-1400	Local Showcase Presentations: Teā (Puatahi Tamariki Wānanga) Laikynn (Ōtakanini Haranui Rangatahi Engagement) Angela (The Forest Bridge Trust KMR Technical Workshops) Karyn & Sue (Arapārerā Community Catchment Group)			
1400-1500	Rotational Activities: Tohu Booklet, Stream Testing (Macroinvertebrates & Water Quality) & Īnanga Spawning Activity			
1500-1515	<i>Karakia Afternoon tea</i>			
1515-1545	Continuation of Rotational Activities			
1545-1600	Closing of Open Day			
1600-1700	Unpack Set up Mattresses Free Time			Wānanga Attendees MTS Crew Haukāinga
1700-1730	Mountains to Sea Programme Introduction			
1730-1800	Whakawhanaungatanga - Round Robin Introductions			
1800-1900	<i>Karakia Dinner</i>			
1900-2000	Poster Presentation Evening			
2000-2100	Optional Spotlighting			



Day 2 – Thursday | Connection to te taiao – Field Trips and Social Evening

Time	Activity	Location	Audience
0730-0830	<i>Karakia Breakfast Prep & Pack Lunch (pack gear and social evening attire for the day)</i>	Te Kia Ora Marae	Wānanga Attendees MTS Crew Haukāinga
0830-1000	Keynote Presentations - Mel Nahi (Looking Back to Inform te Awa Hōteo Futures) & Kim Jones + Nic Naysmith (Whakapapa of a Movement: The National Īnanga Spawning Programme)		
1000-1015	Travel to Omeru Reserve	Omeru Reserve	
1015-1200	Omeru Reserve Guided Hīkoi & Activity		
1200-1230	Lunch at Omeru Reserve		
1230-1300	Travel to Field Trip Locations	Mangakura Boat Club or TBC	
1300-1630	Local Field Trips - Hōteo Kayak or Arapārera Community Catchment Group Showcase		
1630-1800	Travel Back to Marae & Prepare for Social Evening	Mangakura Boat Club	
1800-2100	Social Evening at Mangakura Boat Club - note bar is cash only	Mangakura Boat Club	
2100-2115	Travel back to Te Kia Ora Marae	Te Kia Ora Marae	



Day 3 – Friday | Building and Maintaining Connections - Workshops and Activities

Time	Activity	Location	Audience
0800-0900	<i>Karakia Breakfast</i>	Te Kia Ora Marae	Wānanga Attendees MTS Crew Haukāinga
0900-1000	Keynote Presentations (TBC)		
1000-1015	Paramanawa - Morning Tea		
1015-1215	Facilitated Workshop		
1215-1300	<i>Lunch</i>		
1300-1430	Facilitated Workshop cont.		
1430-1440	Thank you from Mountains to Sea Conservation Trust		
1440-1510	Wānanga Whakamutunga Closing from Haukāinga		
1500-1510	Thank you from Mountains to Sea Conservation Trust		
1510-1530	Whakamutunga Closing from Haukāinga		



Day 3 - Friday cont. | Start of Mountains to Sea Crew Training

Friday afternoon marks the official end of the Te Kia Ora based wānanga and the start of our Mountains to Sea Crew Community Based Freshwater Monitoring (CBFM) workshop and coordinator endorsement days.

Time	Activity	Location	Audience
1530-1600	Pōwhiri for Training Day Attendees Kaputī	Te Kia Ora Marae	MTS Crew Haukāinga
1530-1600	Clean up for Those Staying Free Time		
1600-1800	CBFM Training - Part 1 (2hrs)		
	Facilitated Train the Trainer Education Workshop - Recorded		
1800-1900	Dinner for Those Staying		
1900-2000	Free Time CBFM Training - Part 2 (1hr)		



Day 4 - Saturday | Marine Monitoring Showcase & Crew Training

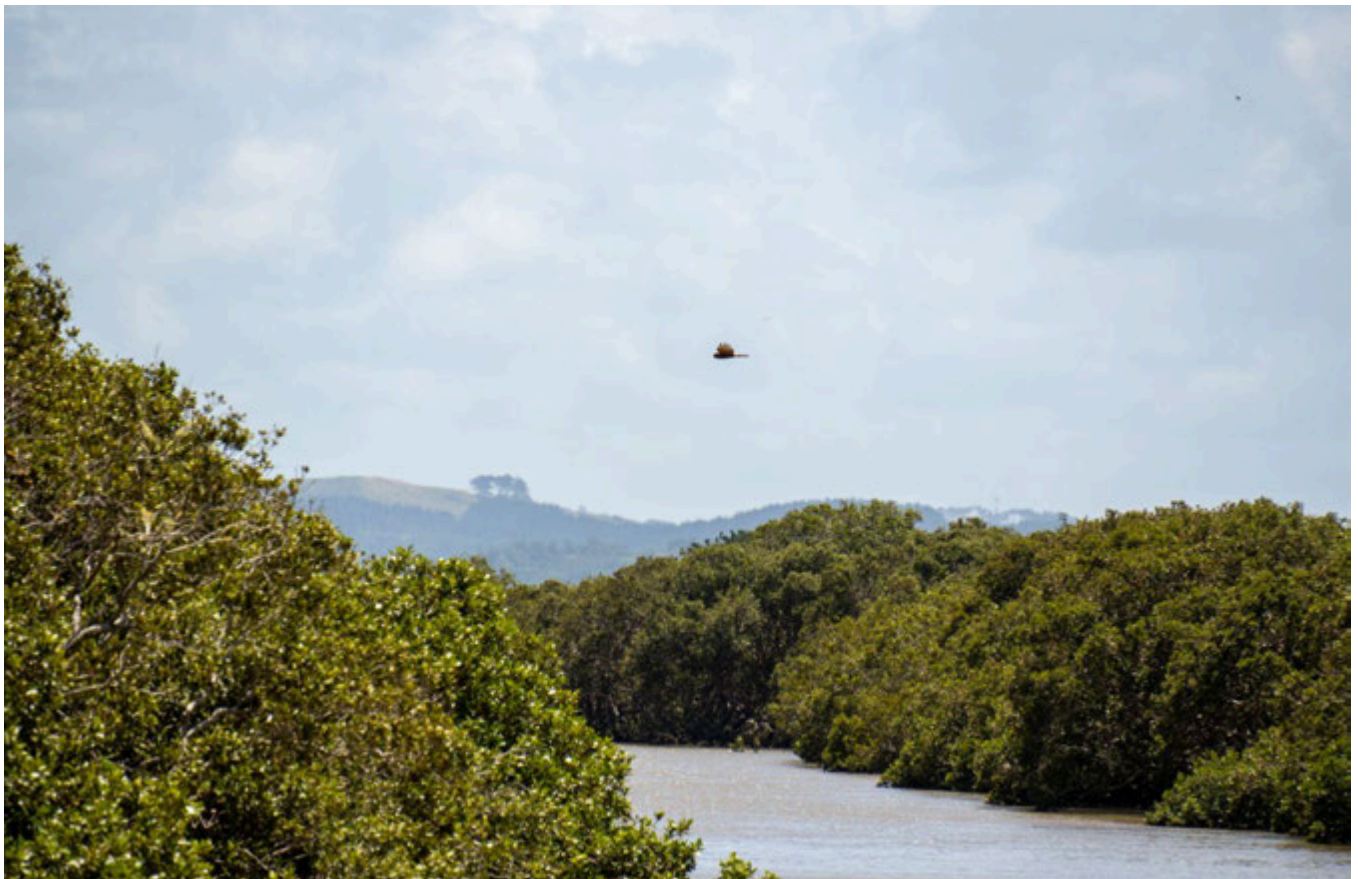
There is the option for members of the community and full wānanga attendees to join us on Saturday for snorkels at Te Kohuroa - Matheson Bay and the Whangateau Harbour in the afternoon. Wānanga and open day attendees will be provided with a link to register for the snorkel activities.

Time	Activity	Location	Audience
0730-0830	<i>Karakia Breakfast</i>		MTS Crew Haukāinga
0830-0930	Travel to Te Kohuroa - Matheson Bay	Te Kia Ora Marae	Optional Wānanga Attendees
0930-1000	Welcome to Te Kohuroa - Introduction from Te Kohuroa Rewilding Initiative		Community optional for snorkelling
1000-1130	Marine Monitoring Showcase via Snorkel	Te Kohuroa Matheson Bay	Wānanga Attendees
	CBFM Training - Part 3 (1.5hrs)		MTS Crew
1130-1230	<i>Karakia Packed Lunch</i>		Haukāinga
1230-1700	CBFM Training - Part 4 (4.5hrs)	Leigh Hall	
	Whangateau Catchment Collective Showcase - Including snorkelling the sandstone reef and a kōrero	Whangateau Harbour	MTS Crew Optional
1700-1800	Travel Back to Marae	Te Kia Ora Marae	Haukāinga
1800-1900	<i>Karakia Dinner</i>		



Day 5 – Sunday | Crew Training Continued

Time	Activity	Location	Audience
0730-0830	<i>Karakia Breakfast Pack Away Mattresses and Start Clean</i>	Te Kia Ora Marae	MTS Crew Optional Haukāinga
0830-1130	CBFM Training - Part 5 (3 hrs)		
	Games Workshop - Recorded		
1130-1230	Karakia Lunch of Leftovers		
1230-1330	Final Clean up		





Tikanga – Protocols

Koha

Please bring some cash to add to the koha for the marae.

What to Wear for the Pōwhiri

- Tāne please wear long pants
- Wāhine please wear a skirt below the knees if possible or long pants (black preferable)

Waiata to Practice

[Purea nei](#) - pōwhiri (1st waiata)

[E hara i te mea](#) - pōwhiri (2nd waiata if needed)

[Tūtira Mai Ngā Iwi](#) - to thank the ringawera

Wharenui

- Do not wear shoes inside
- Do not bring in food and drink (water in a drink bottle is ok)
- Do not bring in any kitchen utensils
- Do not sit on pillows
- Do not hang clothes & towels up in the whare

Wharekai

- Don't sit on tables
- Don't put hats on tables
- Karakia will be done before kai (we promote everyone to take the opportunity to lead this - can be in other languages other than te reo)
- Help out in the kitchen and with clean up where possible

Wharepaku – Toilets

- Only use mops assigned for wharepaku cleaning
- Clean up after yourself
- Help out with cleaning where possible

Getting There

If you are travelling outside of the region please arrive by Tuesday to ensure you are at the pōwhiri on time on Wednesday morning. If you do not make it to pōwhiri on Wednesday morning you will not be able to attend any marae based activities for the wānanga. We will have a second pōwhiri on Friday afternoon for those just attending the training.

Driving

We will be in contact if you have indicated that you have space and ability to carpool if required.

Locations

- 📍 Te kia Ora Marae
- 📍 Mangakura Boat Club
- 📍 Omeru Reserve
- 📍 Te Kohuroa / Mathesons Bay
- 📍 Whangateau Reserve
- 📍 Leigh Community Hall

Parking

There is car parking available on the marae grounds - car pooling is advised for the field trips.

What to Bring

- Cash to add to koha for marae
- Cash for the bar at the social evening
- Sleeping bag/duvet, pillow
- Towel
- Torch or head torch (if spotlighting)
- Gumboots or shoes you don't mind getting wet
- Plenty of warm clothes
- Rain jacket
- Swimwear (if snorkelling or if you wish to swim)
- Drink bottle
- Keep cup and lunch box - Snacks (if you think you will require extra kai outside of standard meals) - please ensure to not bring into wharenuī)
- Glad rags for Thursday night

Refunds and Cancellation Policy

If you have a paid registration - for a full refund we need 2 weeks notice. Any other refunds will be on a case by case basis and may incur an administration fee.

If you have a sponsored spot and can no longer attend - please give us as much notice as possible so that we are able to offer the spot to someone else. We reserve the right to charge a non attendance fee.



MOUNTAINS TO SEA
CONSERVATION TRUST

